

## ACCOUNTABILITY INFORMATION REQUIRED BY THE FEDERAL NO CHILD LEFT BEHIND ACT

The information below is used to determine the Adequate Yearly Progress designation for your school. A school is designated as *Not Meeting AYP* if any indicator is determined to be *Not Met*. The Student Achievement and Student Participation ratings are based on 2006-2007 and 2007-2008 Oregon Statewide Assessments for the students in your school identified as enrolled for a full academic year. The statewide goal for the minimum percentage of students expected to meet or exceed standards is 60% in English/Language Arts and 59% in Mathematics. Student Participation is expected to be 95% or greater. The statewide goal for the minimum graduation rate is 68.1%. The statewide goal for the minimum attendance rate is 92.0%. For more information, please view documents at [www.ode.state.or.us/data/reportcard/reports.aspx](http://www.ode.state.or.us/data/reportcard/reports.aspx)

STUDENT GROUP	STUDENT ACHIEVEMENT		STUDENT PARTICIPATION		GRADUATION
	ENGLISH/LANGUAGE ARTS	MATHEMATICS	ENGLISH/LANGUAGE ARTS	MATHEMATICS	
Race/Ethnicity					
White	MET	MET	MET	MET	MET
African American/Black	NA	NA	NA	NA	NA
Hispanic	NA	NA	NA	NA	MET
Asian/Pacific Islander	NA	NA	NA	NA	NA
Am. Indian/Alaskan Native	NA	NA	NA	NA	NA
Multi-Racial/Multi-Ethnic	NA	NA	NA	NA	NA
Students with Disabilities	MET	NOT MET	MET	MET	MET
Limited English Proficient	NA	NA	NA	NA	MET
Economically Disadvantaged	MET	NOT MET	MET	MET	MET
All Students	MET	MET	MET	MET	MET

NA Too few test scores or students to determine a rating.

### Department of Education Notes

## LOCAL INFORMATION PROVIDED BY YOUR SCHOOL OR DISTRICT

# 2007-2008 School Report Card

ESTACADA  
HIGH SCHOOL



Dear Parents and Community Members,

October 7, 2008

The Oregon Department of Education is proud to issue the tenth annual school report card. As Oregon schools and districts continue to face many challenges, educators remain committed to providing the highest quality education for Oregon students. This year you will find two ratings displayed on this report card: an Oregon rating and a federal rating required by the No Child Left Behind Act. The report card is not meant to tell you everything about your school, but it offers a starting point for discussions about where improvement might be needed and for celebrating successes in education for Oregon's children.

Susan Castillo, State Superintendent of Public Instruction

**Federal Adequate Yearly Progress Rating: NOT MET**

DID NOT MEET     MET  
See rating details on back page

**Oregon Report Card Overall Rating: SATISFACTORY**



## SCHOOL AT A GLANCE

### Testing Participation

School Characteristics Rating: **EXCEPTIONAL**

	School	State
Participation in 2007-2008 Statewide Assessment	98.6%	98.4%

### School Size

	School
Number of Students	721

### English Language Learners

	School
Percentage of Students in ESL Programs	5.4%

### Students Graduating 2006-2007

	School	State
With a Diploma	153	33,444
With a Diploma and a CIM	75	9,591

### SAT Scores

	School	State	Nation
Critical Reading	489	523	502
Math	485	527	515
Writing	451	502	494
Percentage Tested	18%	53%	45%
Number Tested	34	18,377	1,518,859

### Expulsions

	School	State
Number of Expulsions Due to Weapons	1	333

### Staffing

	School
Administrators (FTE)	2.0
Teachers (FTE)	40.3
• Average Years of Experience	11.8
• With a Master's Degree or Higher	62.8%
• With Emergency or Provisional Credential as of January 15, 2008	0.0%
• Classes Taught by Teachers Who Meet Federal Definition of Highly Qualified Teacher	92.4%
• Classes Taught by Teachers Who Do Not Meet Federal Definition of Highly Qualified Teacher	7.6%
Educational Assistants (FTE)	11.3
Other Staff (FTE)	17.0

### Department of Education Notes

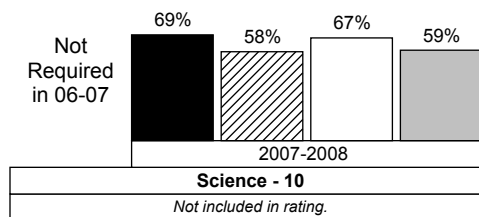
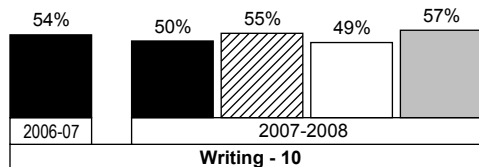
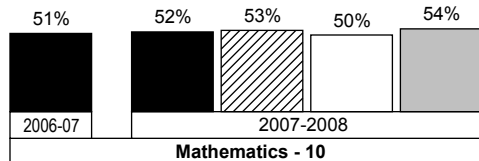
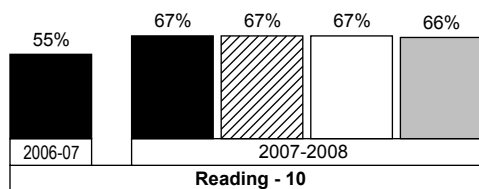
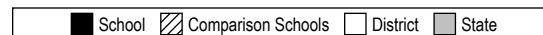
## SCHOOL RATINGS AND SUPPORTING DATA

### Academic Achievement

Student Performance Rating: **SATISFACTORY**

#### Percentage of Students Meeting Standards

The graphs below show the percentage of students in your school at the indicated grades that met or exceeded the state standards on Oregon Statewide Assessments during the last two school years. District, state, and comparison school averages are displayed. Comparison schools are Oregon schools with similar demographics.



### Improvement

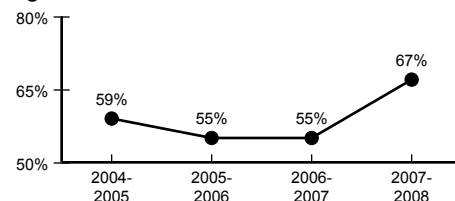
#### Assessments, Attendance, Dropout

Improvement Rating: **STAYED ABOUT THE SAME**

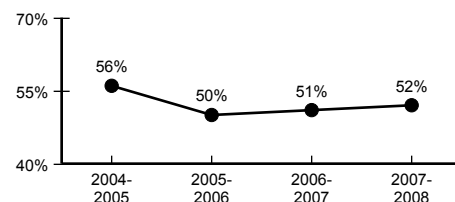
#### Four-Year Improvement

The graphs below show change during the past four years in the percentage of students meeting standards (adopted in 2006-07) for Reading and Math Knowledge and Skills Statewide Assessments and in attendance and dropout rates. The Improvement Rating compares the displayed first two years with the last two years overall and is described by one of the following: Improved, Stayed About the Same, or Declined.

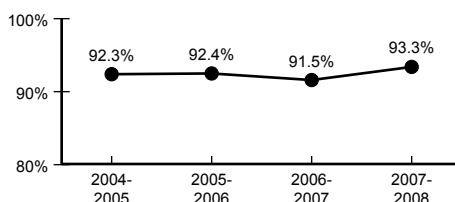
#### Reading



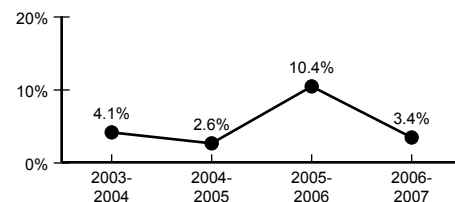
#### Mathematics



#### Attendance



#### Dropout Rate



## SCHOOL RATINGS AND SUPPORTING DATA

### Attendance/Dropout Rates

Student Behavior Rating: **SATISFACTORY**

Attendance	School	District	State	Dropout	Number in School	School	District	State
	2006-2007	91.5%	93.3%		91.0%	2005-2006	78	10.4%
2007-2008	93.3%	94.1%	90.9%	2006-2007	26	3.4%	14.8%	4.3%

## STATEWIDE ASSESSMENT RESULTS

The table below shows the percentage of students in your school in grades 3-8 and 10 that exceeded, met, or did not meet state standards and participated in 2007-2008 Oregon Statewide Assessments. For more information, see [www.ode.state.or.us/data/schoolanddistrict/testresults/reporting/PublicRpt.aspx](http://www.ode.state.or.us/data/schoolanddistrict/testresults/reporting/PublicRpt.aspx)

STUDENT GROUP	STUDENT ACHIEVEMENT						STUDENT PARTICIPATION	
	ENGLISH/ LANGUAGE ARTS			MATHEMATICS			ENGLISH/ LANGUAGE ARTS	MATHEMATICS
	EXCEEDED %	MET %	NOT MET %	EXCEEDED %	MET %	NOT MET %	%	%
Race/Ethnicity								
White	15.7	56.4	27.9	10.8	45.3	43.9	100.0	99.3
African American/Black	*	*	*	*	*	*	100.0	100.0
Hispanic	0.0	6.3	93.8	0.0	6.3	93.8	100.0	100.0
Asian/Pacific Islander	*	*	*	*	*	*	100.0	100.0
American Indian/Alaskan Native	*	*	*	*	*	*	75.0	75.0
Multi-Racial/Multi-Ethnic	---	---	---	---	---	---	---	---
Male	16.8	46.3	36.8	13.8	39.4	46.8	100.0	98.9
Female	14.1	57.7	28.2	5.6	45.1	49.3	98.6	98.6
Talented and Gifted	> 95.0	> 95.0	< 5.0	> 95.0	> 95.0	< 5.0	100.0	100.0
Students with Disabilities	9.1	18.2	72.7	0.0	13.6	86.4	100.0	100.0
Migrant	0.0	8.3	91.7	0.0	8.3	91.7	100.0	100.0
Limited English Proficient	< 5.0	< 5.0	> 95.0	0.0	9.1	90.9	100.0	100.0
Economically Disadvantaged	6.5	46.8	46.8	3.9	37.7	58.4	98.7	98.7
All Students	15.7	51.2	33.1	10.3	41.8	47.9	99.4	98.8

\* Not displayed to protect student confidentiality.

--- No data available

### Department of Education Notes

For more information, contact the Oregon Department of Education at [report.card@state.or.us](mailto:report.card@state.or.us) or 503-947-5780.

For more information, please view documents at [www.ode.state.or.us/data/reports/toc.aspx](http://www.ode.state.or.us/data/reports/toc.aspx)