

ESTACADA  
SCHOOL DISTRICT

# Eagle Creek Elementary

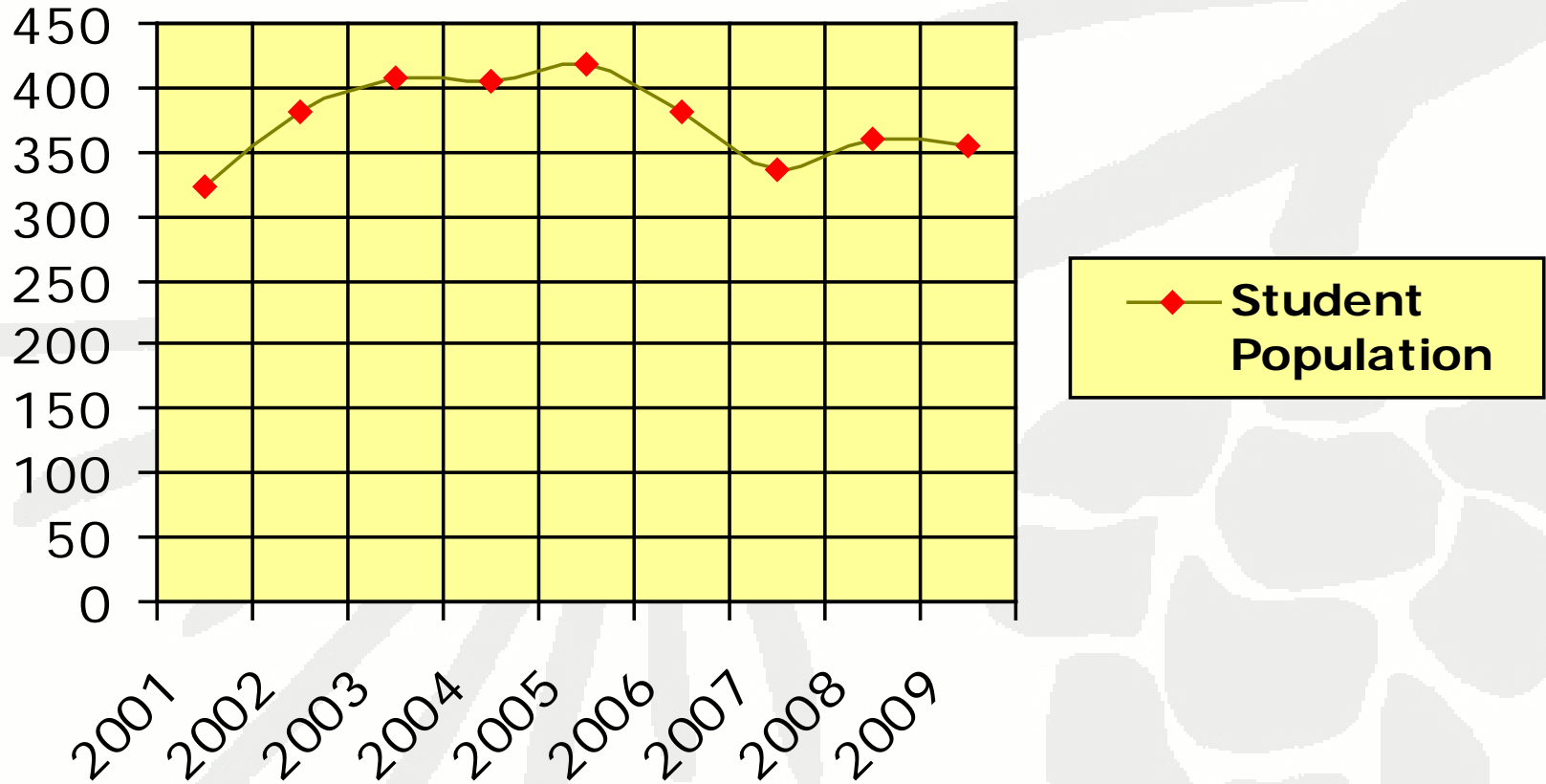
## School Improvement Plan Executive Summary

Report to the Estacada School District  
Board of Directors November 18, 2009

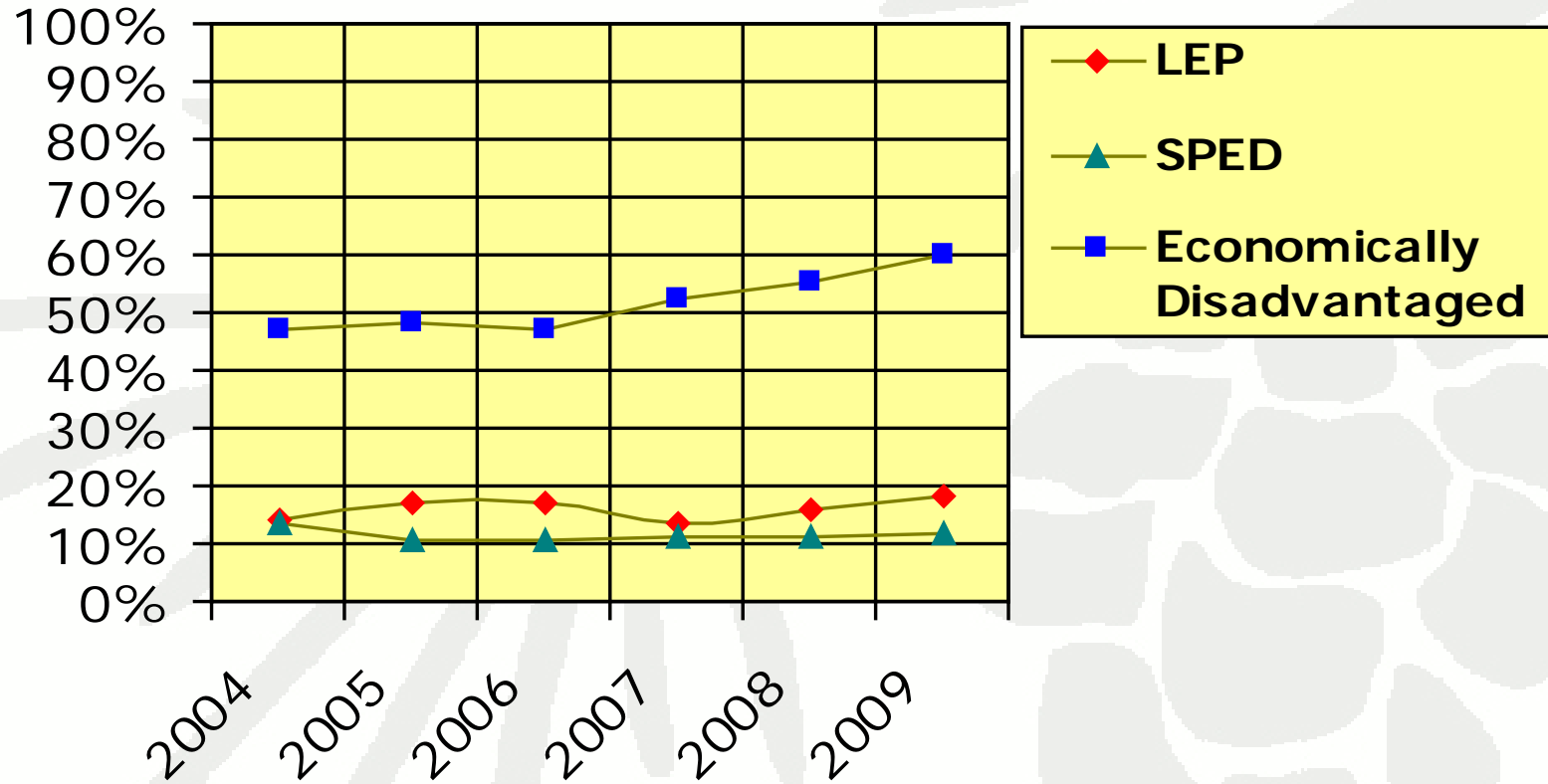
*"A Student Friendly Learning Environment"*

ESTACADA  
SCHOOL DISTRICT

# Demographics

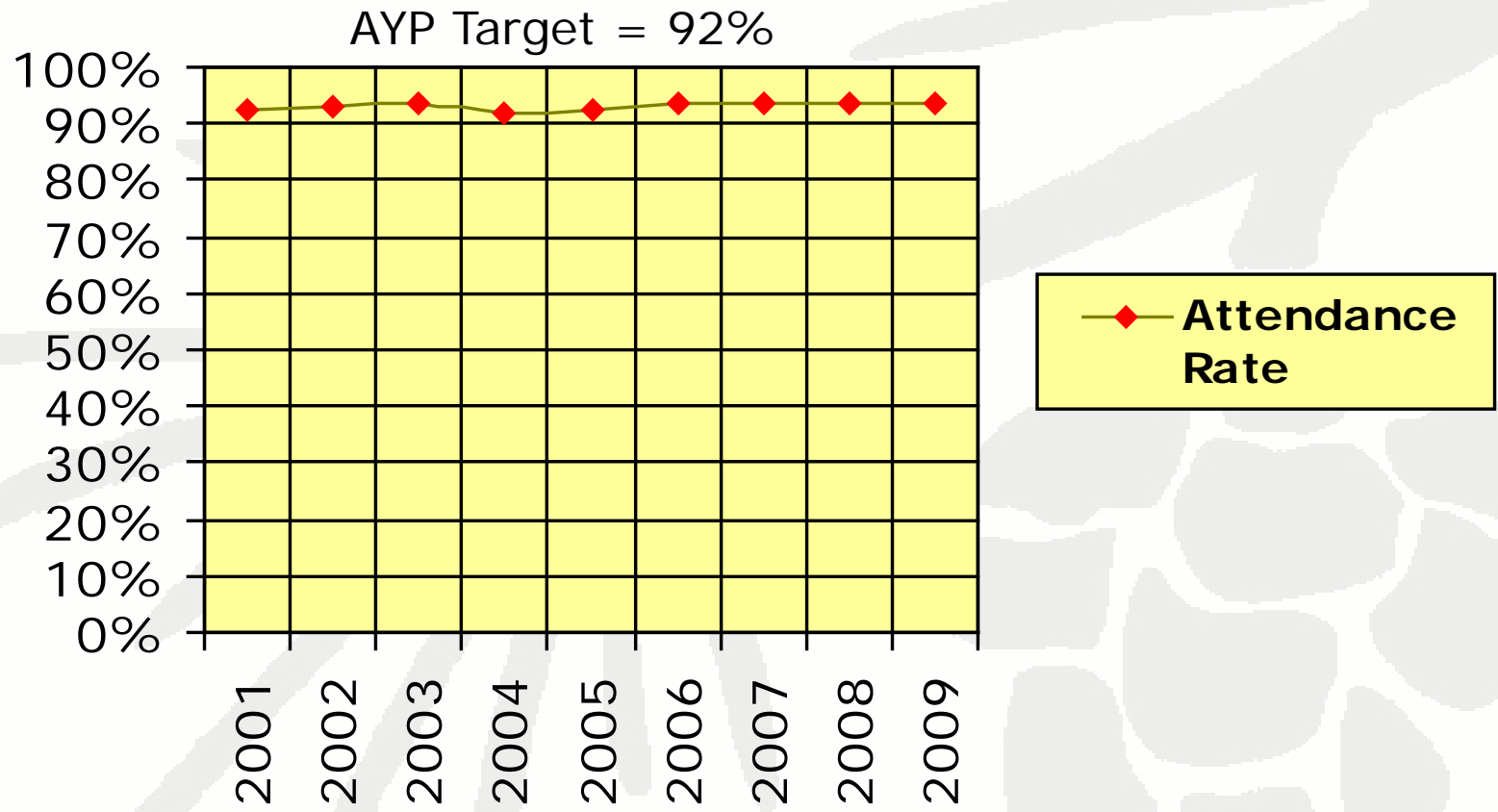


# Demographics



**ESTACADA  
SCHOOL DISTRICT**

# Student Attendance

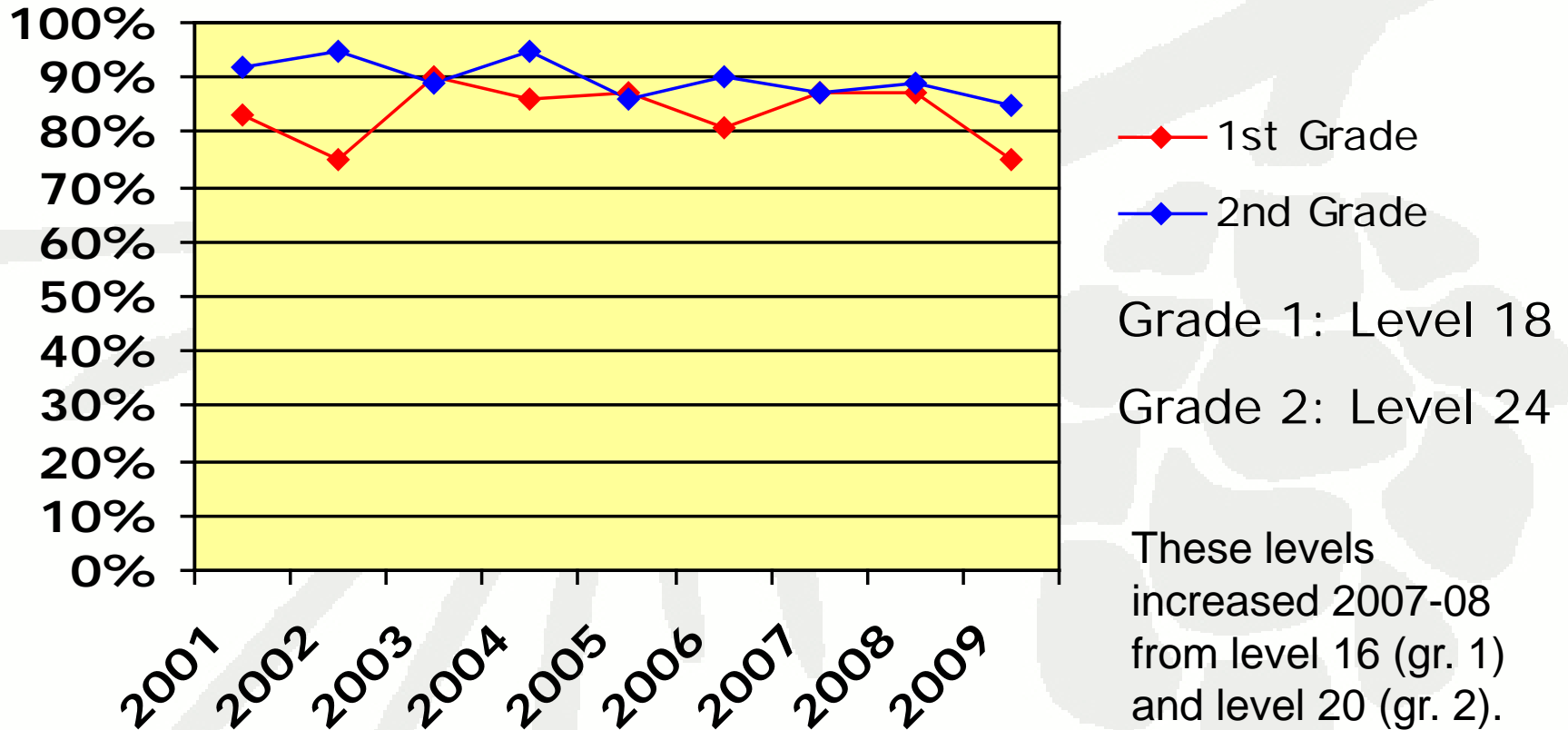


*"A Student Friendly Learning Environment"*

ESTACADA  
SCHOOL DISTRICT

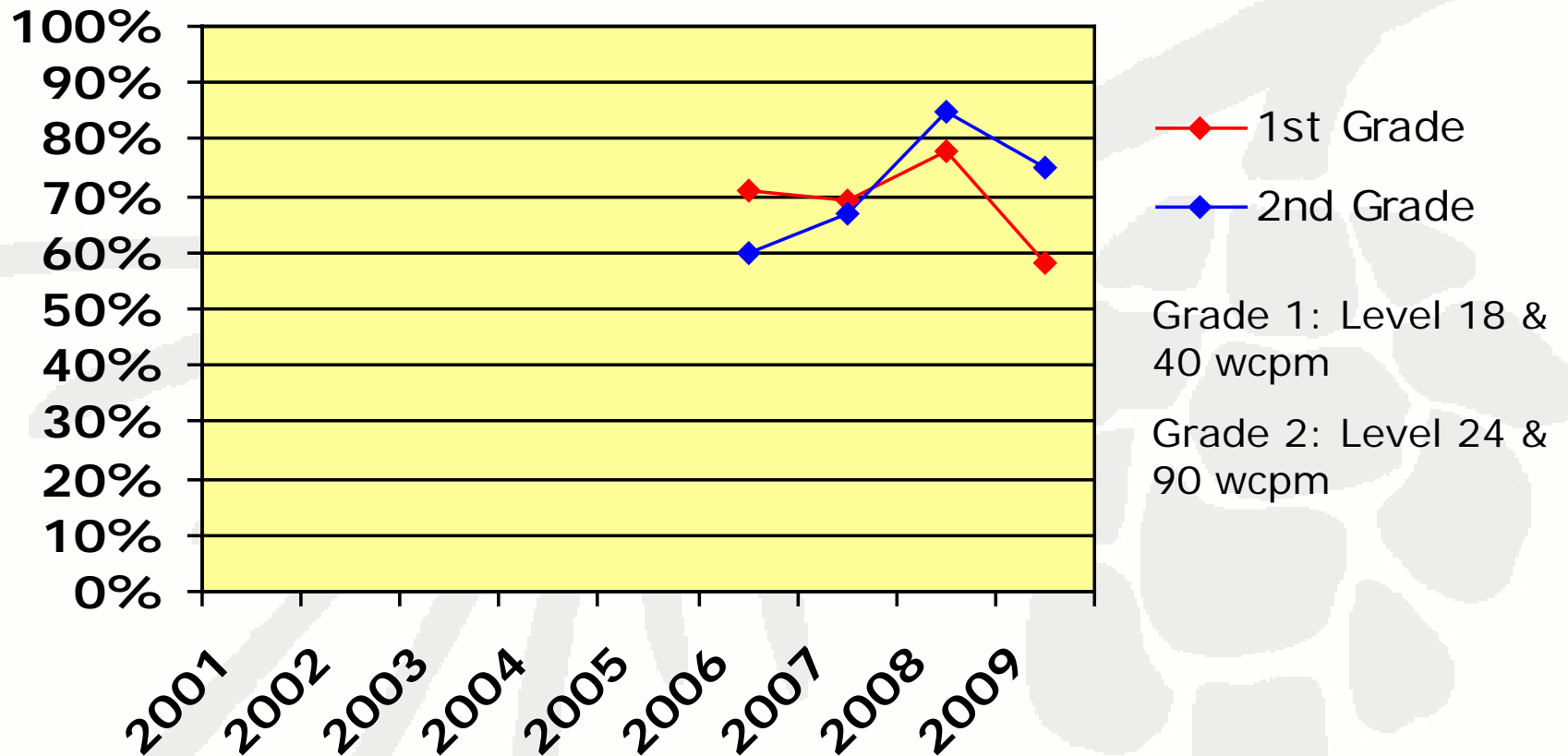
# Reading 1<sup>st</sup> and 2<sup>nd</sup> Grade

## Levels Testing (Decoding)



ESTACADA  
SCHOOL DISTRICT

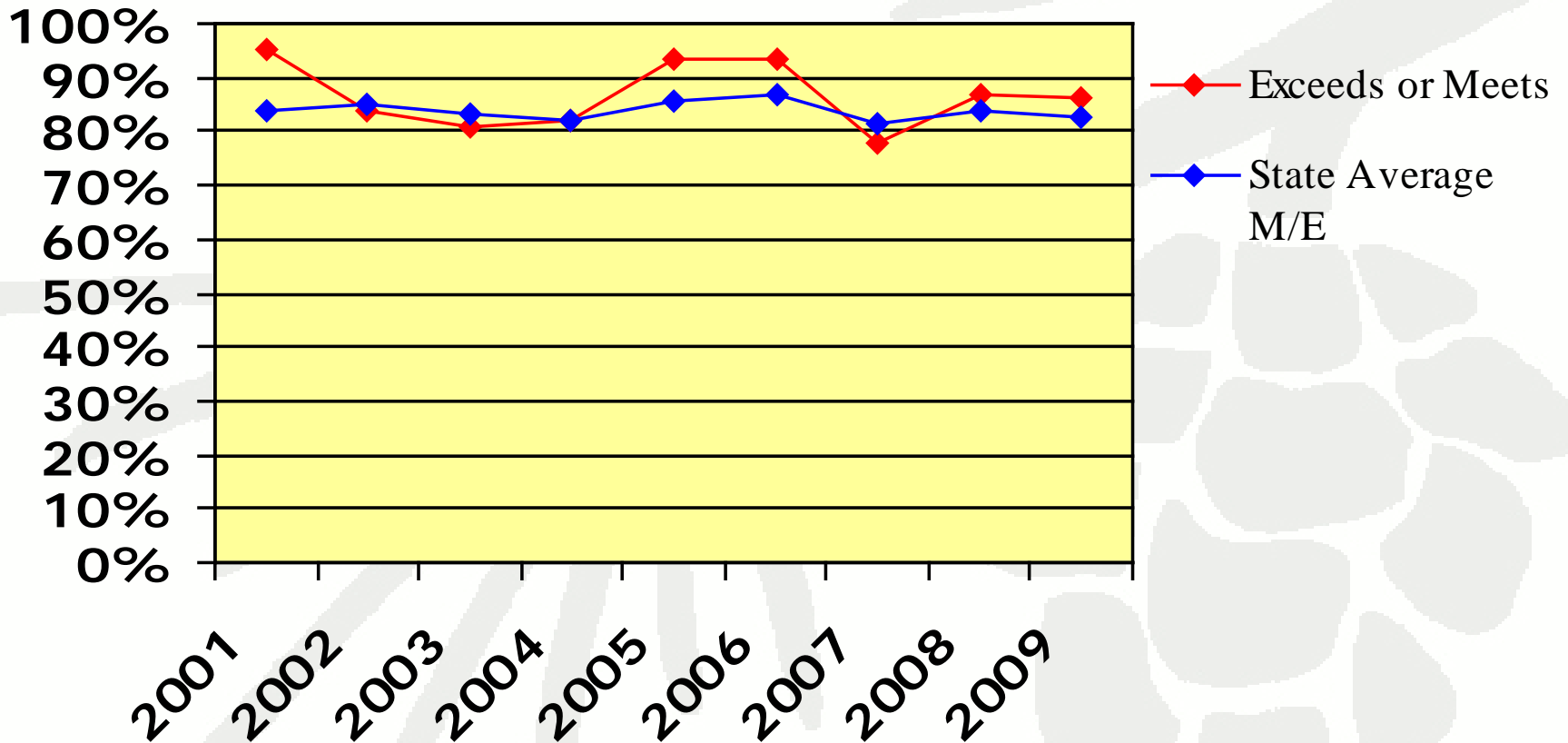
# Reading 1<sup>st</sup> and 2<sup>nd</sup> Grade (Fluency)



ESTACADA

SCHOOL DISTRICT

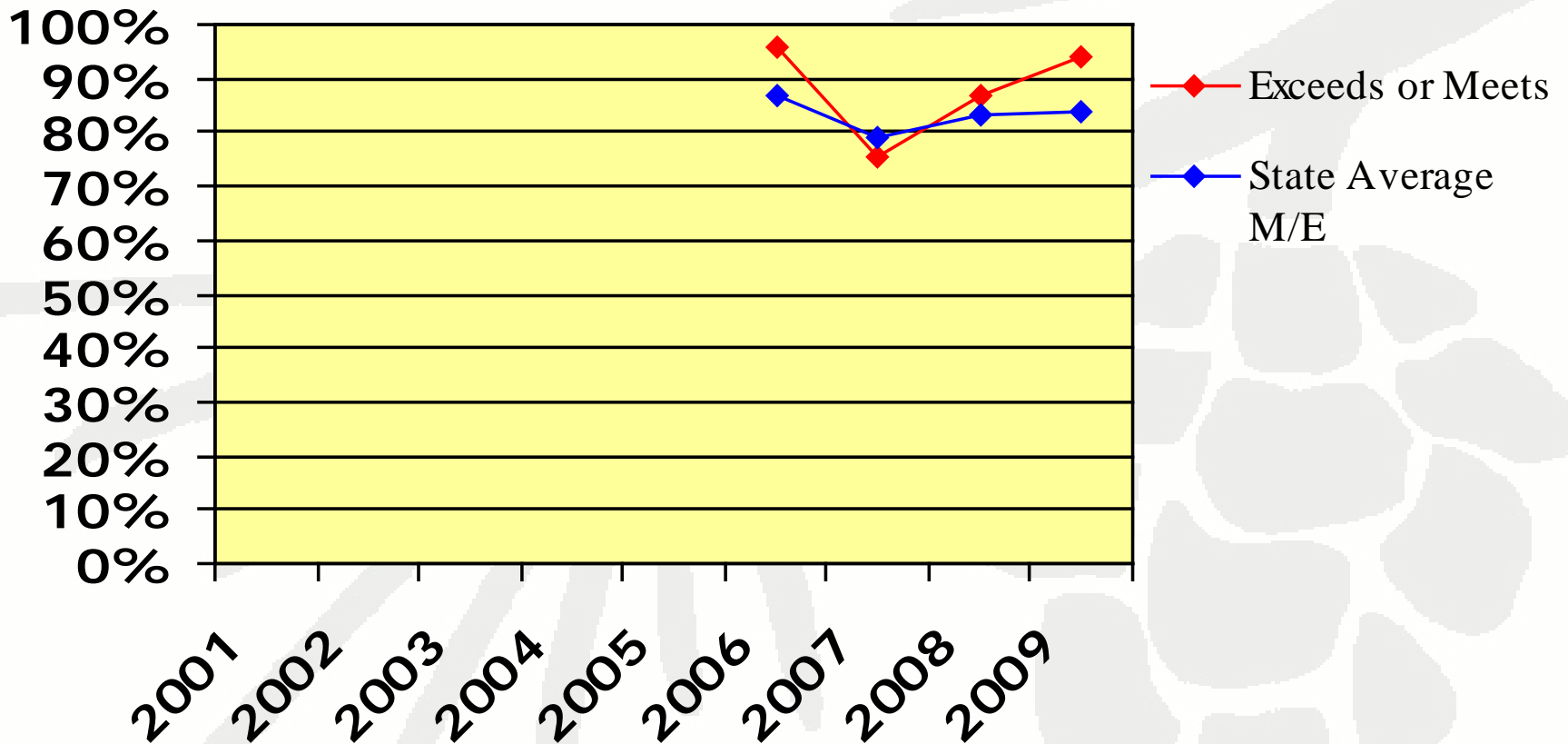
# Reading and Literature 3<sup>rd</sup> Grade



*"A Student Friendly Learning Environment"*

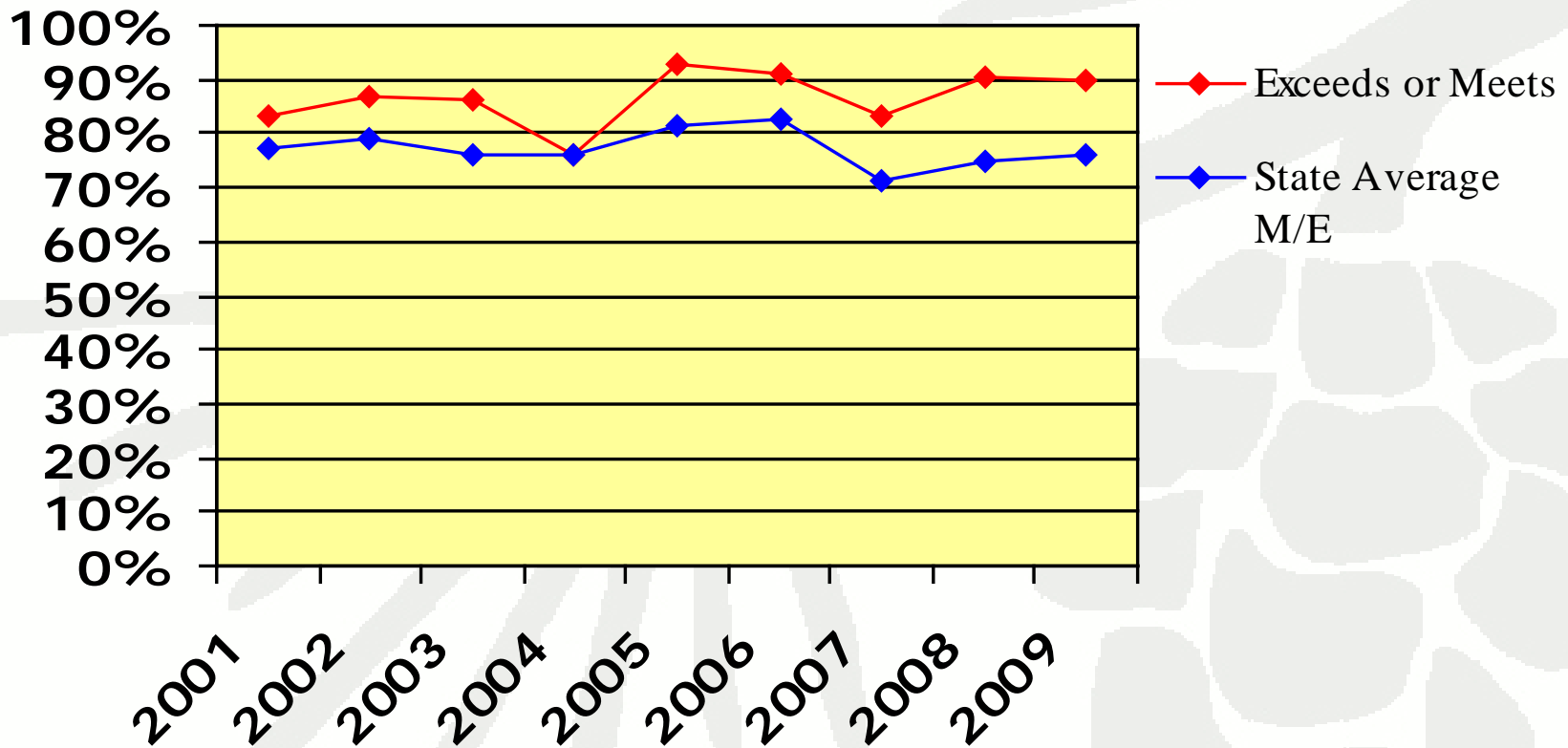
ESTACADA  
SCHOOL DISTRICT

# Reading and Literature 4th Grade



ESTACADA  
SCHOOL DISTRICT

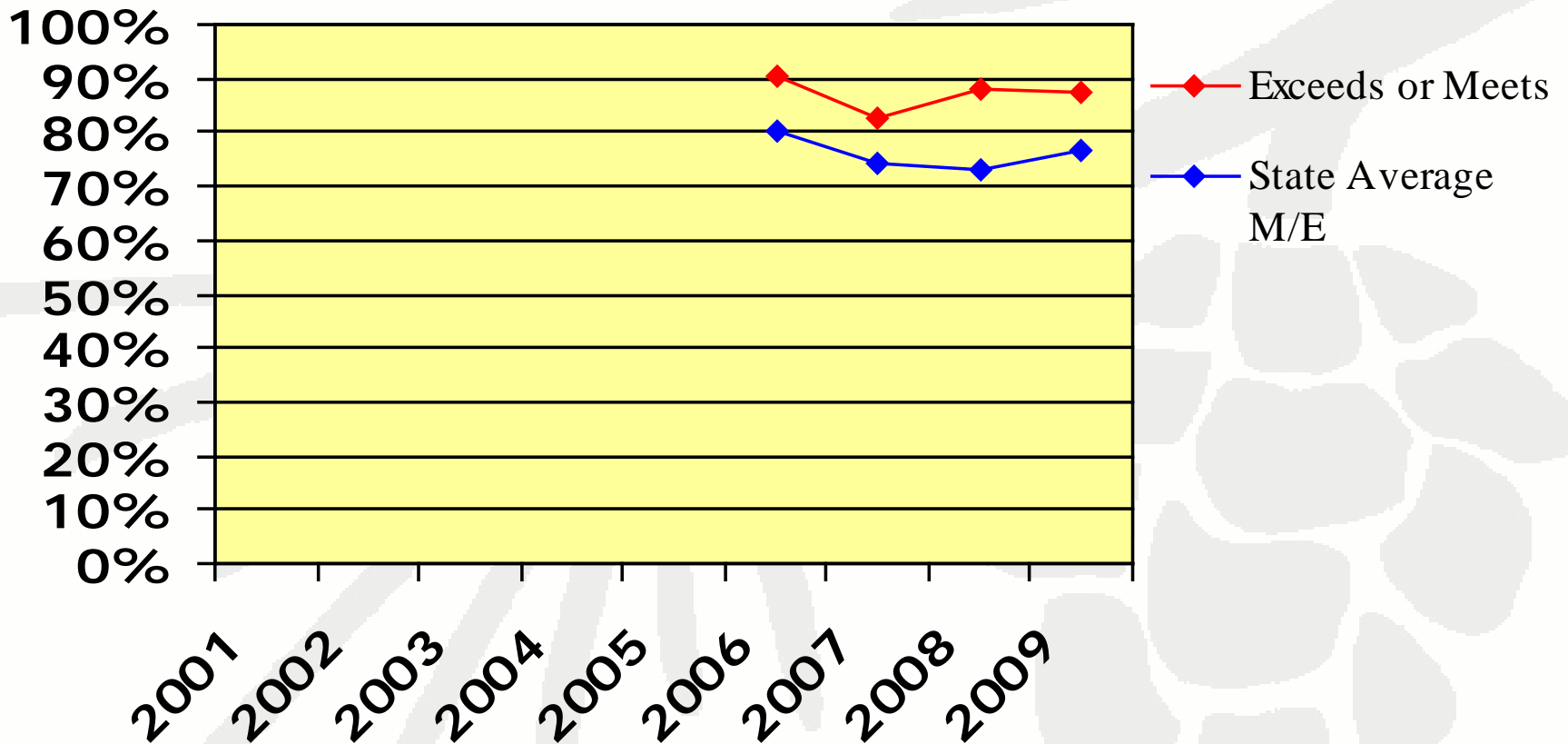
# Reading and Literature 5<sup>th</sup> Grade



*"A Student Friendly Learning Environment"*

ESTACADA  
SCHOOL DISTRICT

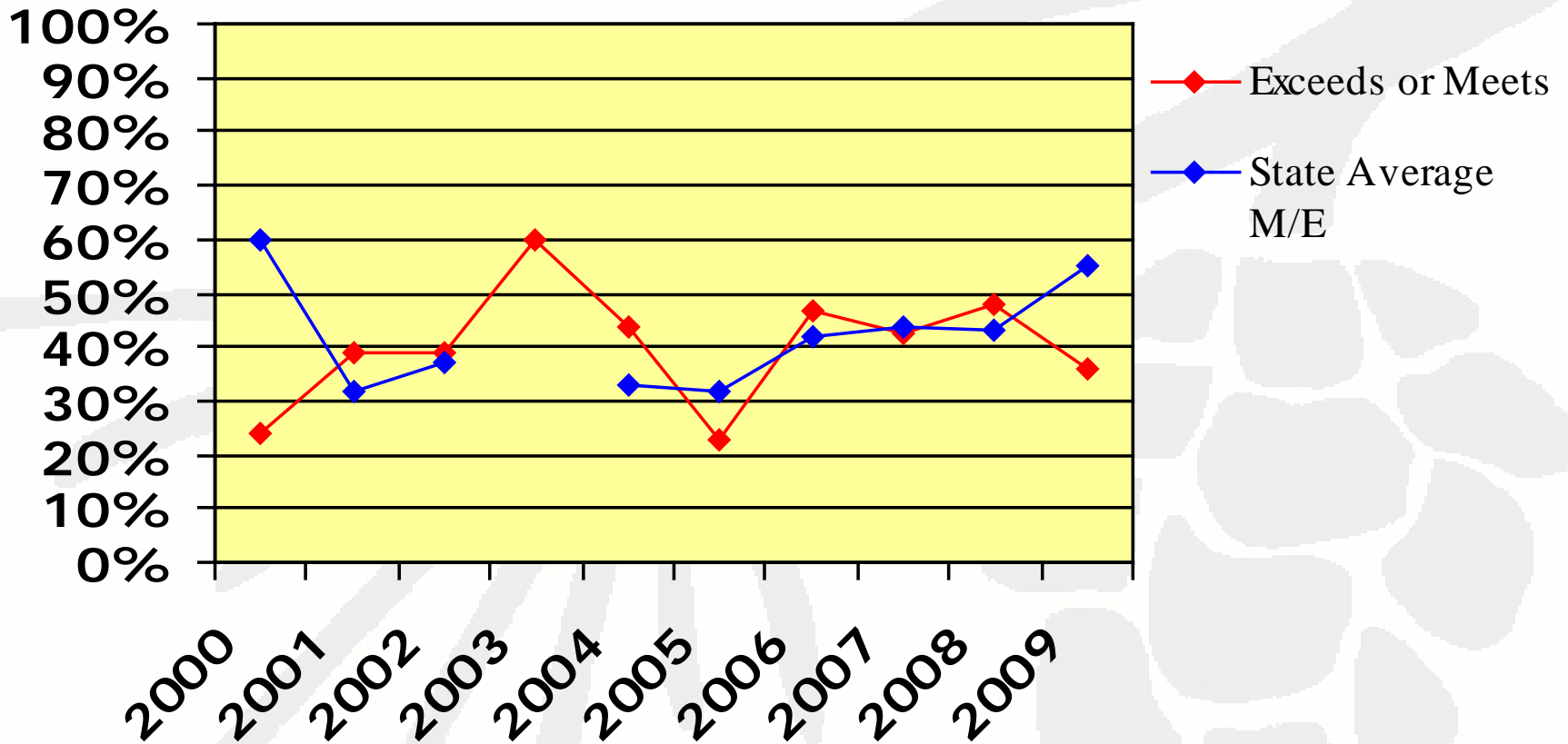
# Reading and Literature 6th Grade



*"A Student Friendly Learning Environment"*

ESTACADA  
SCHOOL DISTRICT

# Writing 4<sup>th</sup> Grade



*"A Student Friendly Learning Environment"*

# Continuous Improvement Interventions/Strategies-Reading

**GOAL:** 90% of all Eagle Creek students will meet or exceed on state assessments.

**STRATEGIES:**

1. Continuation of Language Arts Adoption (Harcourt)
2. Focus on fluency instruction – training provided by our Title I staff
3. Continued use of small group instruction
4. Periodically Monitor and Change Title I groups (Differentiation)
5. Fluency Lab
6. Accelerated Reader
7. Language Arts is a focus for PLCs
8. Study Island for Reading/Language Arts

# Continuous Improvement Interventions/Strategies-Writing

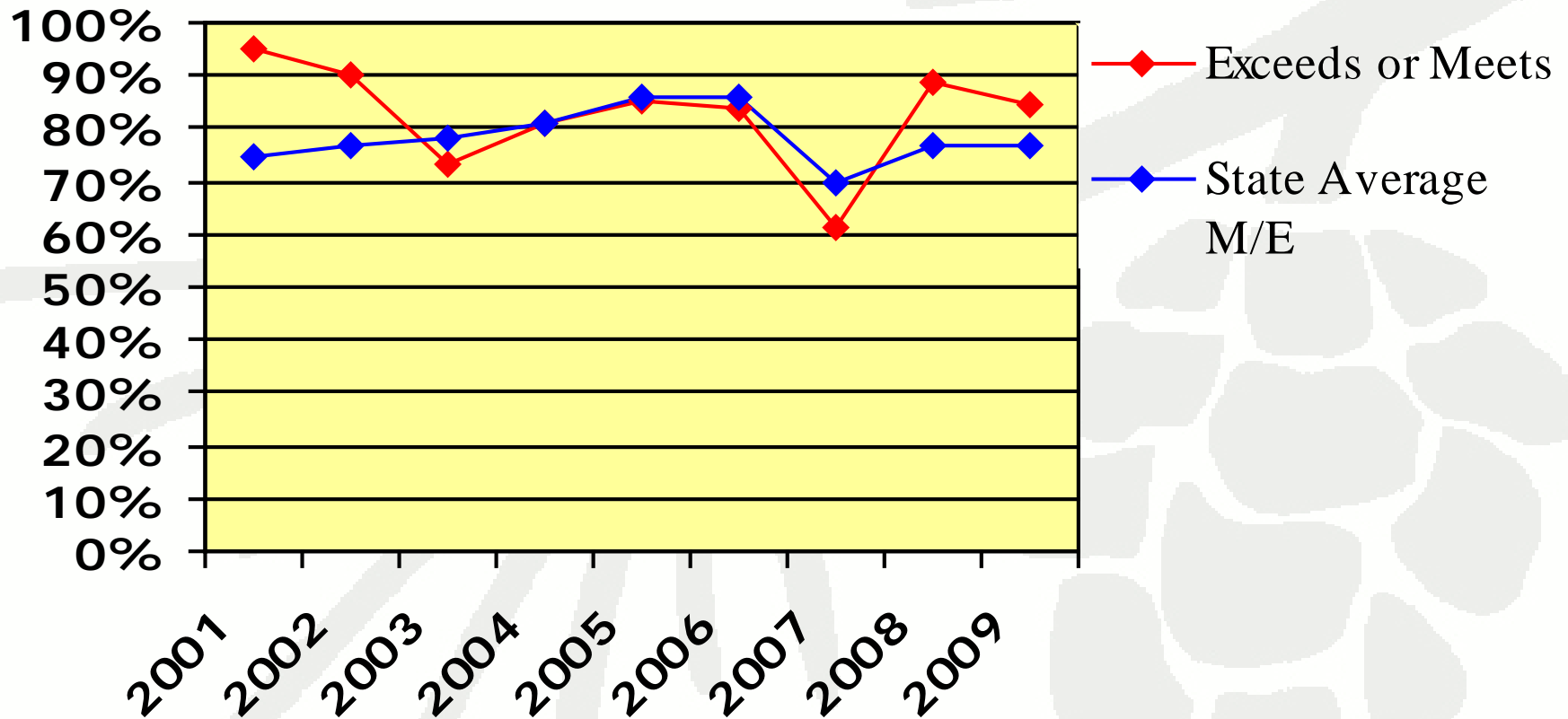
**GOAL:** 55% of Eagle Creek 4<sup>th</sup> grade students will meet or exceed on state assessments.

**STRATEGIES:**

1. Title I providing additional writing support for students
2. Writing Training for Staff (Step-Up to Writing & County Scoring Training)
3. Monthly Work Samples with detailed feedback for students
4. Using elements of 4-Square, Write Traits, and Writers Workshop, and Step-Up to Writing
5. Consistency with writing graphic organizers
6. Effective use of student-friendly scoring rubrics and quality anchor papers
7. Targeted Intervention for 3<sup>rd</sup> & 4<sup>th</sup> grade writers
8. Targeted Writing Intervention for 3<sup>rd</sup> & 4<sup>th</sup> grade ELL students

ESTACADA  
SCHOOL DISTRICT

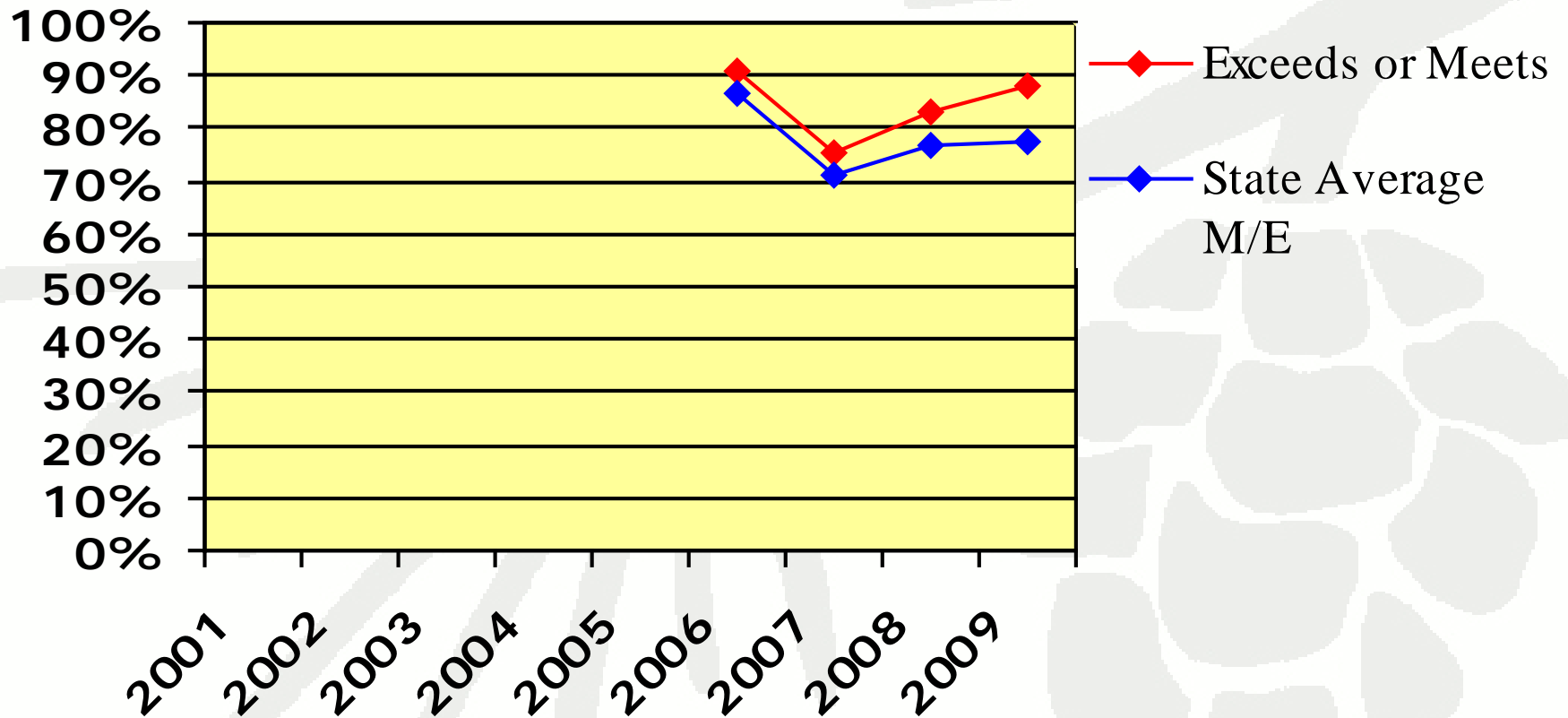
# Math 3<sup>rd</sup> Grade



*"A Student Friendly Learning Environment"*

ESTACADA  
SCHOOL DISTRICT

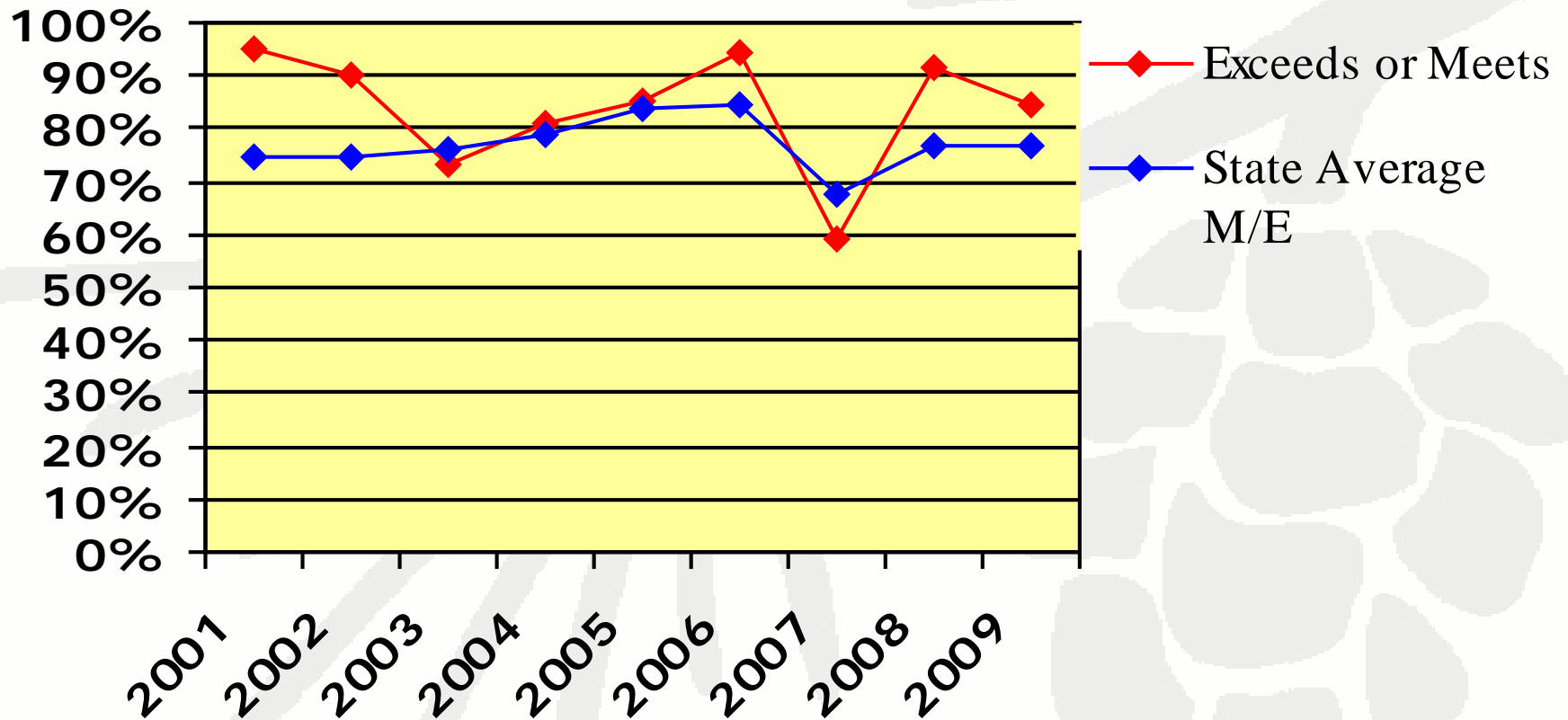
# Math 4th Grade



*"A Student Friendly Learning Environment"*

ESTACADA  
SCHOOL DISTRICT

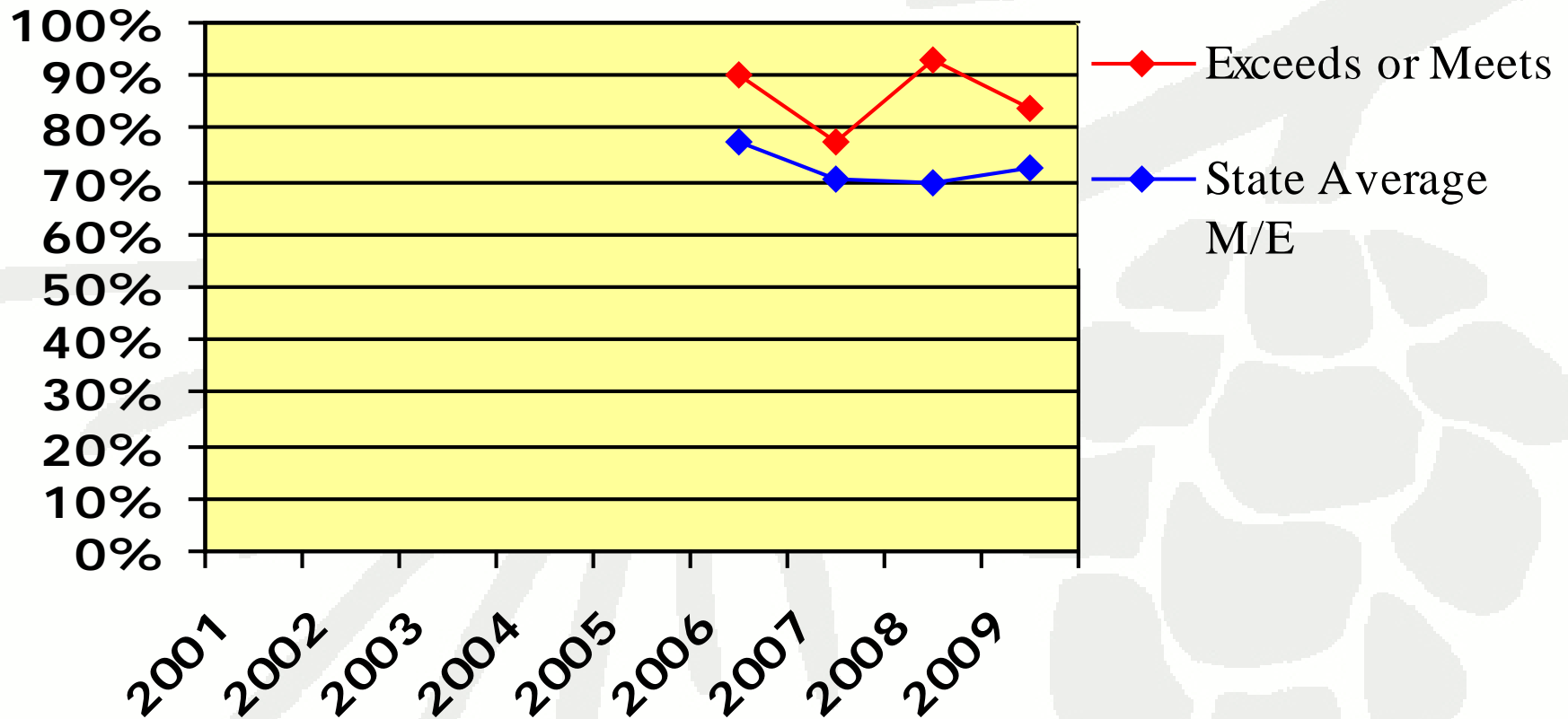
# Math 5<sup>th</sup> Grade



*"A Student Friendly Learning Environment"*

ESTACADA  
SCHOOL DISTRICT

# Math 6th Grade



*"A Student Friendly Learning Environment"*

# Continuous Improvement Interventions/Strategies-Math

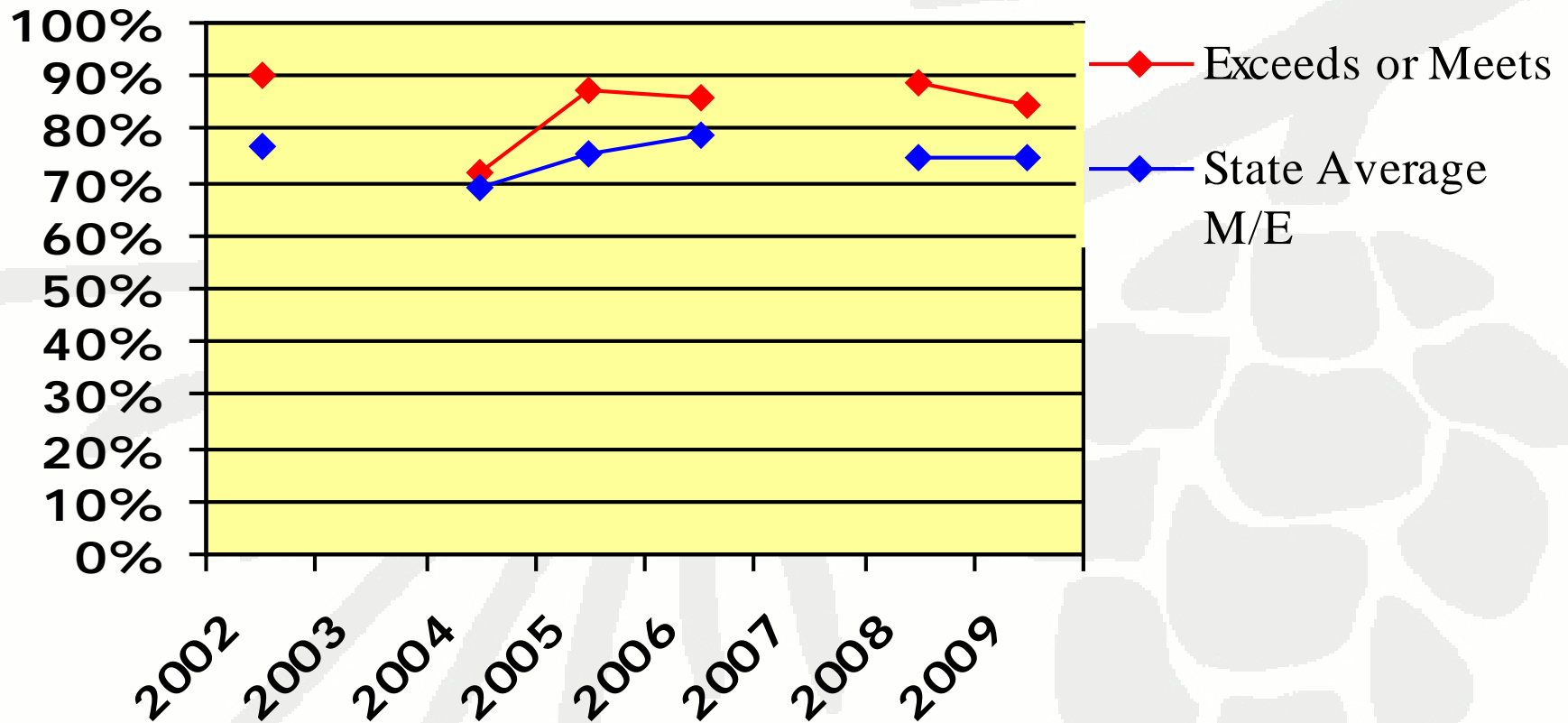
**GOAL:** 90% of all Eagle Creek students will meet or exceed on state assessments.

**STRATEGIES:**

1. Continue to implement accelerated math program
2. Common Math hour to maximize staff resources
3. Professional Learning Communities/Common Formative Assessments/Interventions & Enrichment
4. Curriculum mapping, alignment, and year-end assessments
5. Title I support in math
6. Support from Oregon Council of Teachers of Math (OCTM)
7. New Math Adoption – “Math Connects” & “Triumphs”

ESTACADA  
SCHOOL DISTRICT

# Science 5<sup>th</sup> Grade



*"A Student Friendly Learning Environment"*

# Continuous Improvement Interventions/Strategies-Science

**GOAL:** 90% of all Eagle Creek students will meet or exceed on state assessments

## **STRATEGIES:**

1. Use and Analysis of State Science Sample Tests
2. Scientific Inquiry process by students
3. Hands-on learning experiences in science
4. Enrichment available after school through “Mad Science”
5. Relevant Field Trips & Outdoor Experiences
6. Increase awareness and educational opportunities through our school garden

# Highlights!

- We met Adequate Yearly Progress (AYP)!
- We had an “Outstanding” Overall School Rating from ODE
- Attendance has stayed above 93%.
- We have continued our Pyramid of Interventions (one for academics and one for behavior), and I-Team, in order to ensure student success.
- We have successfully implemented Positive Behavior Support (PBS)
- Professional Learning Communities are working hard to create common formative assessments, analyze results/data, and share their best ideas, teaching strategies, and interventions & enrichment.
- We are continuing our GLAD (Guided Language Acquisition Design) training – to help ALL students achieve, but particularly our ELL students.